



PO Box 673, Ludington, MI 49431
(231) 845-7417
office@lakeshorekeepers.org

To: State Historic Preservation Office and National Park Services
From: Lakeshore Keepers
(Formally known as Sable Points Lighthouse Keepers Association)
Subject: Solar Power Installation at Manistee North Pierhead Light
Date: June 17, 2025

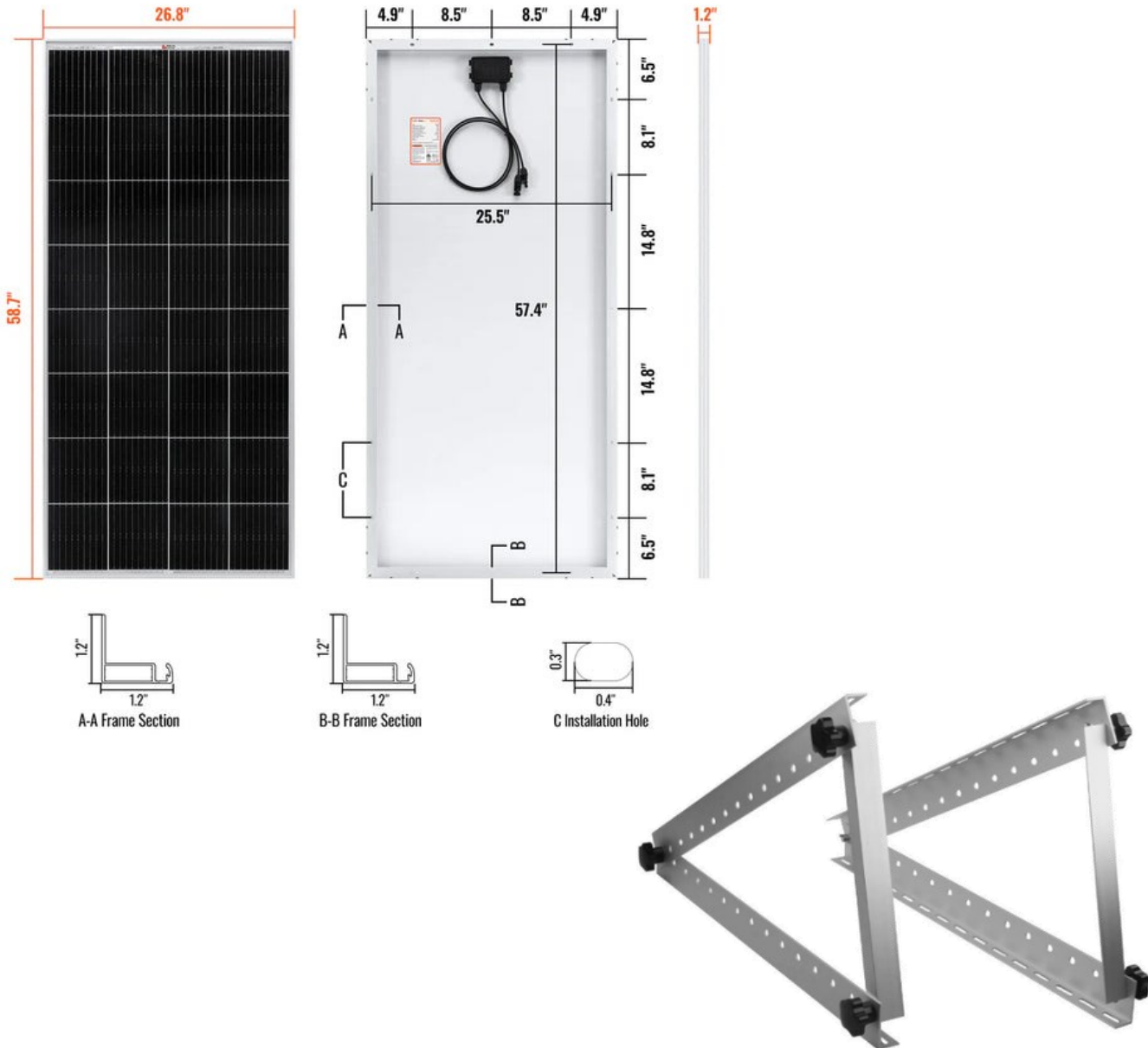
Please accept this letter and corresponding pages as the proposed plan to install solar panels at Manistee North Pierhead Light in Manistee, MI. These solar panels will charge a battery cell located on the first level, which will power interior lighting and be used for operational needs. Lakeshore Keepers intends on overbuilding the power needed in order to have growth at the site in the near future. This growth will include, but is not limited to a live-feed camera at the top of the tower, an historic video, and interactive displays.

I look forward to discussing this plan and determining any necessary modifications to improve this project. Thank you for your time and dedication for opening historic structures to the public.

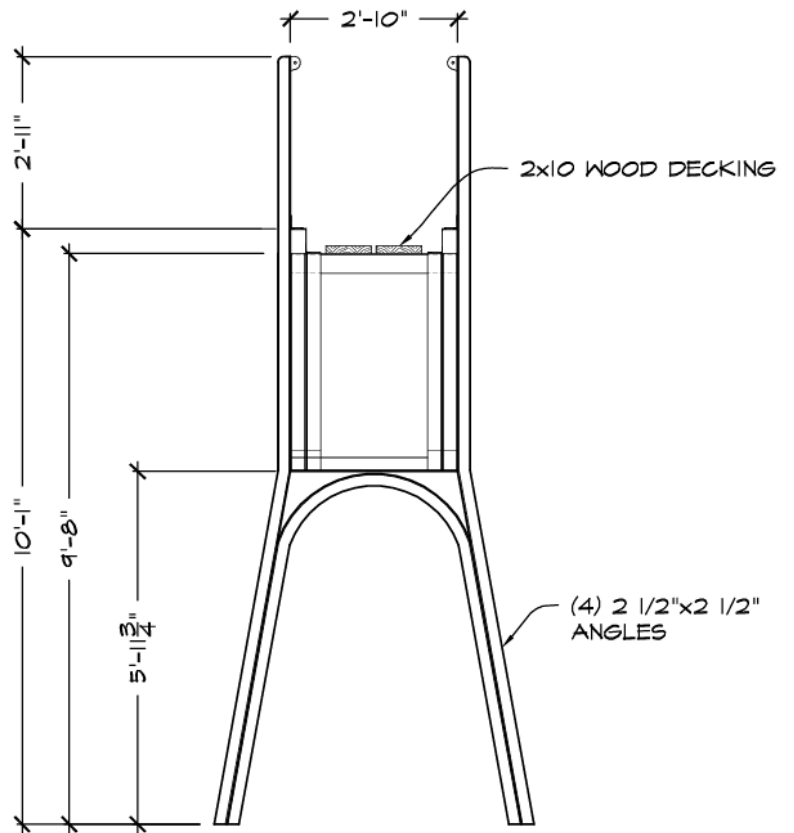
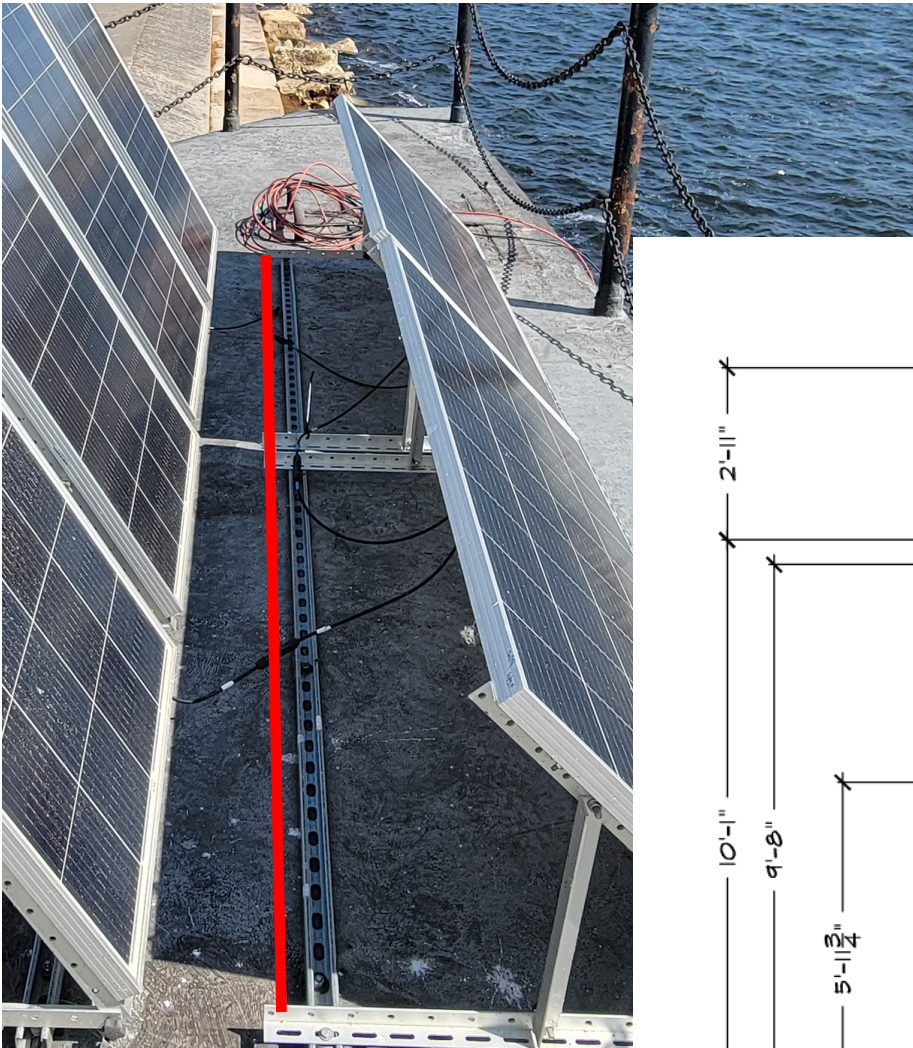
With Best Regards,

Jack Greve
Lakeshore Keepers
Executive Director

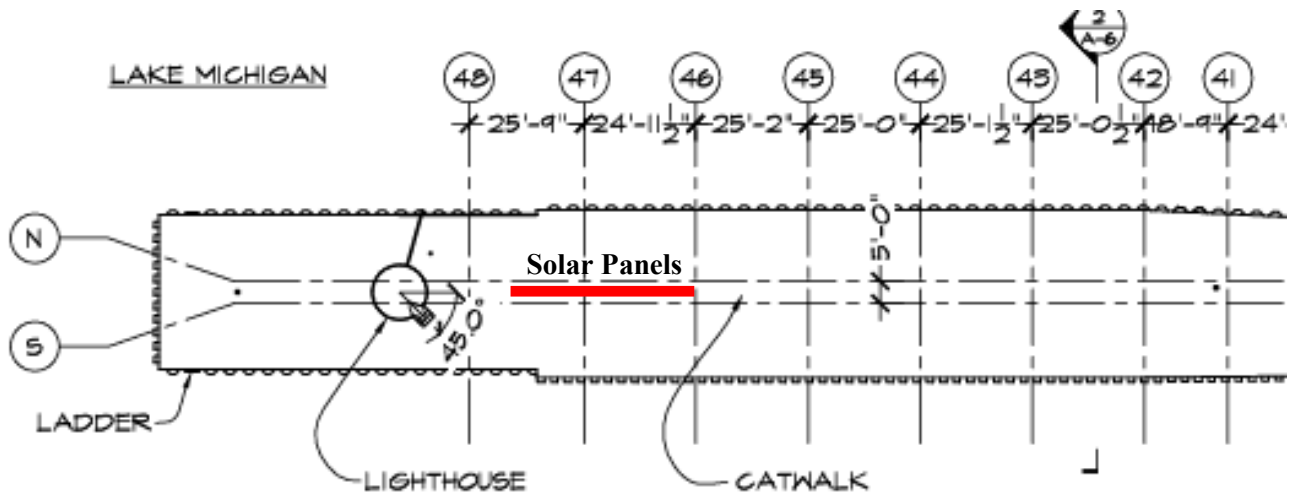
Six 200w solar panels have been purchased for the Manistee North Pierhead Light. These panels will be install seasonally in the month of May and will be removed in September of each year. Brackets shown below will also be removed. Panels and brackets will be stored on the first level of the Light during the winter season.



Lakeshore Keepers will be installing metal framing to the catwalk which will support the solar panels and brackets. This same method was used at the Ludington North Breakwater Light, as seen below. The framing will be install with screws into the two 2x10 wood decking of the catwalk. These metal frames will remain installed year-round.



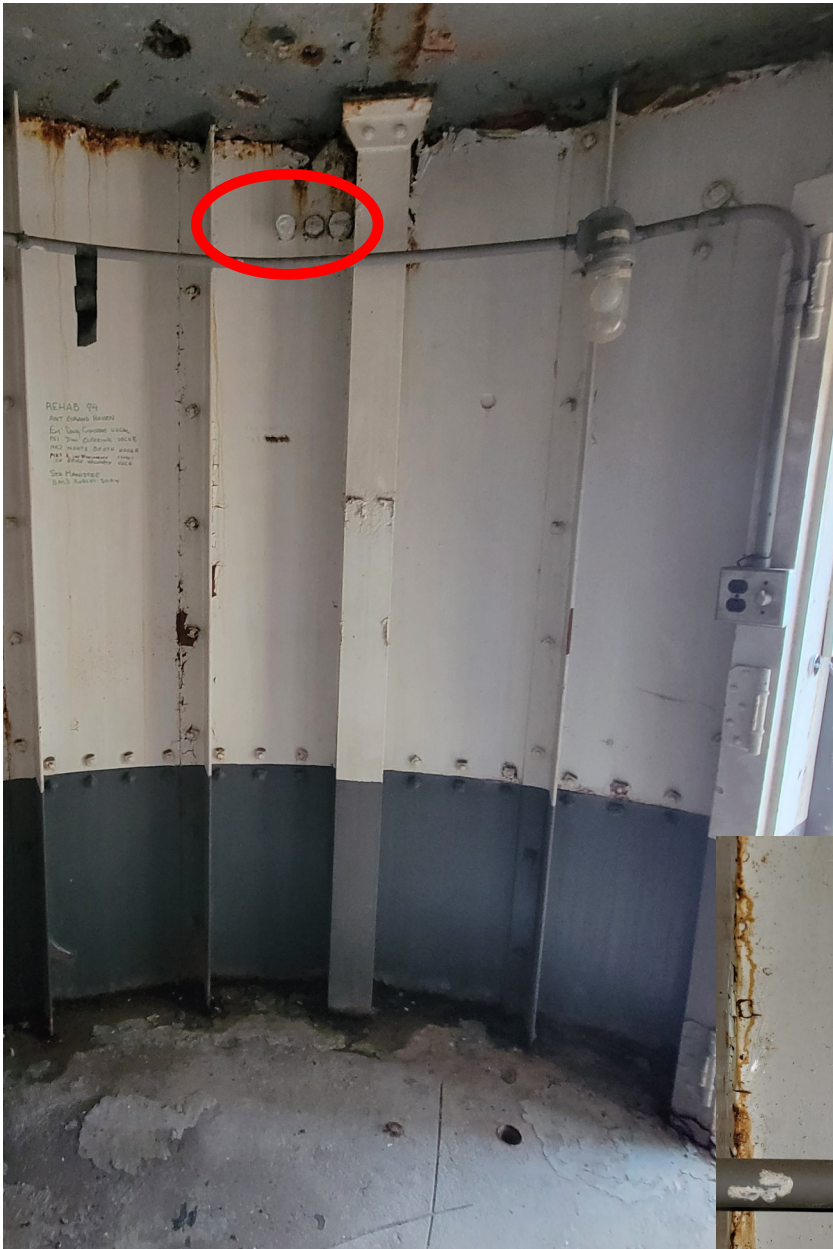
The solar panels will be positioned in their landscape position, and will total over 30ft in length side-by-side. The first panel will be installed approximately 20ft east of the light to avoid visual distractions from the tower. Once linked together, the power cord will enter the tower just below the catwalk into the first level using existing holes.





PO Box 673, Ludington, MI 49431
(231) 845-7417
office@lakeshorekeepers.org

The solar panel's cord will enter into the first level. The battery unit will be installed into a ventilated box to keep it out of site, accessible, and cool.

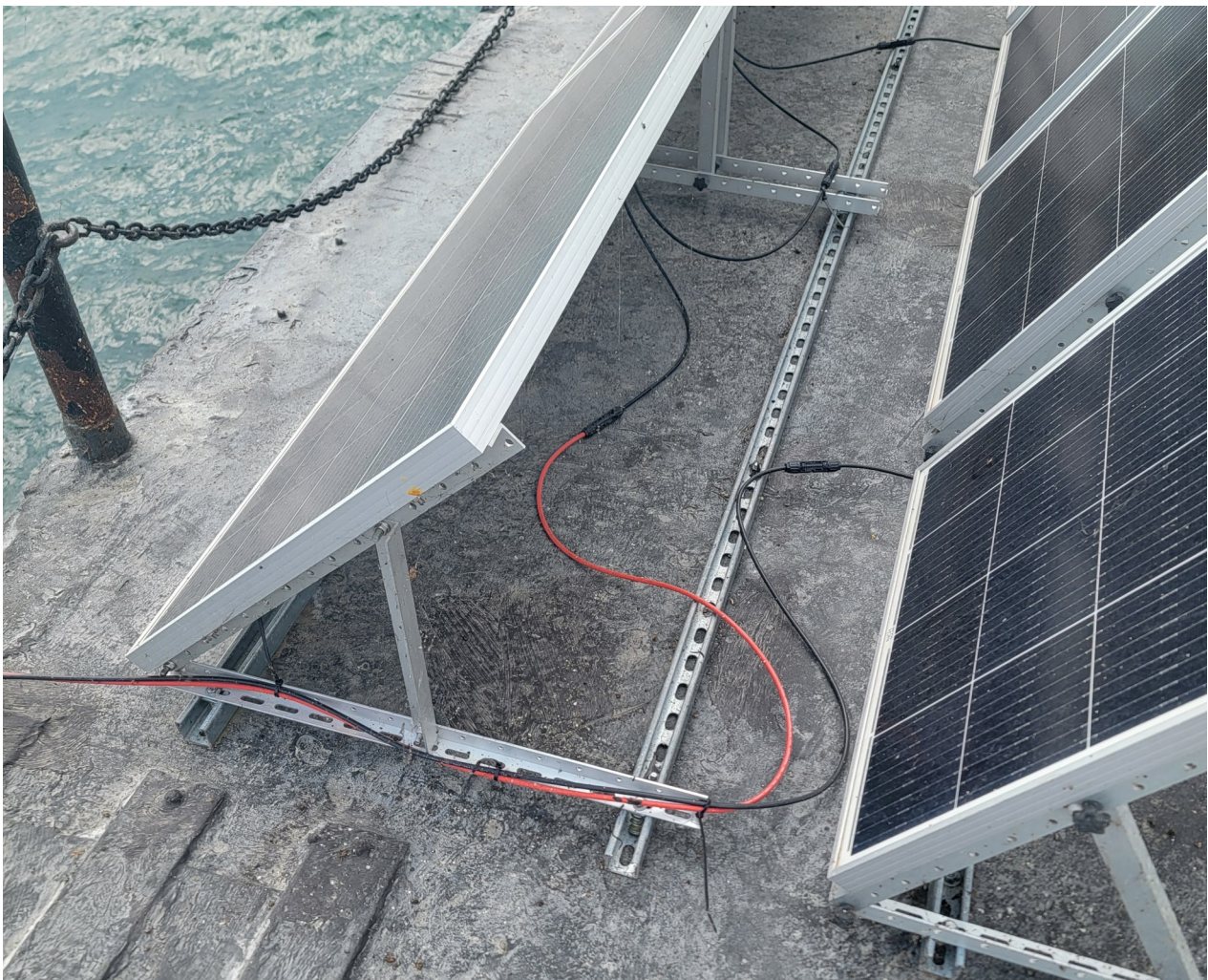




PO Box 673, Ludington, MI 49431
(231) 845-7417
office@lakeshorekeepers.org

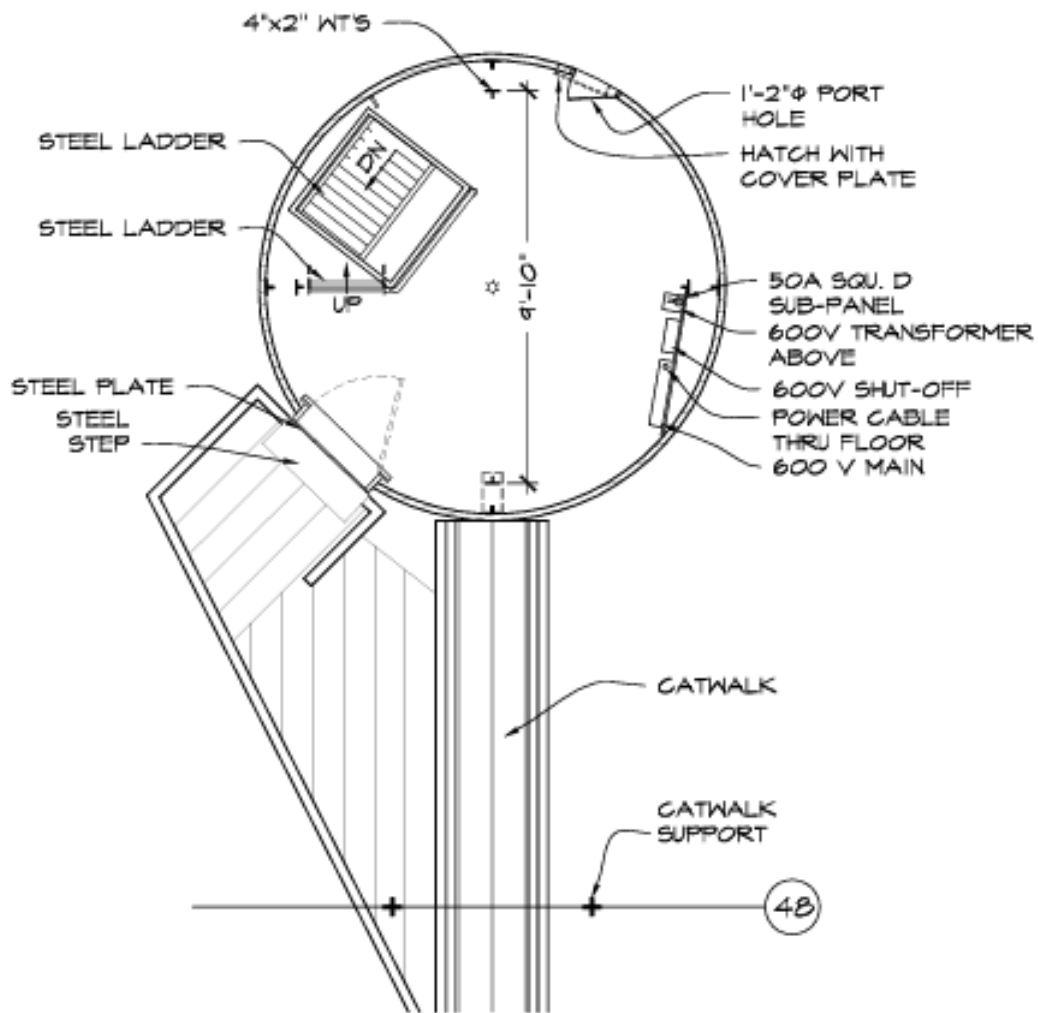
Please use this additional image as a reference point.

- Solar panels at Ludington North Breakwater Light.



Please use this additional image as a reference point.

- Manistee North Pierhead Light and second level of the Light.



LEVEL L-2
 SCALE: 1/4" = 1'-0"